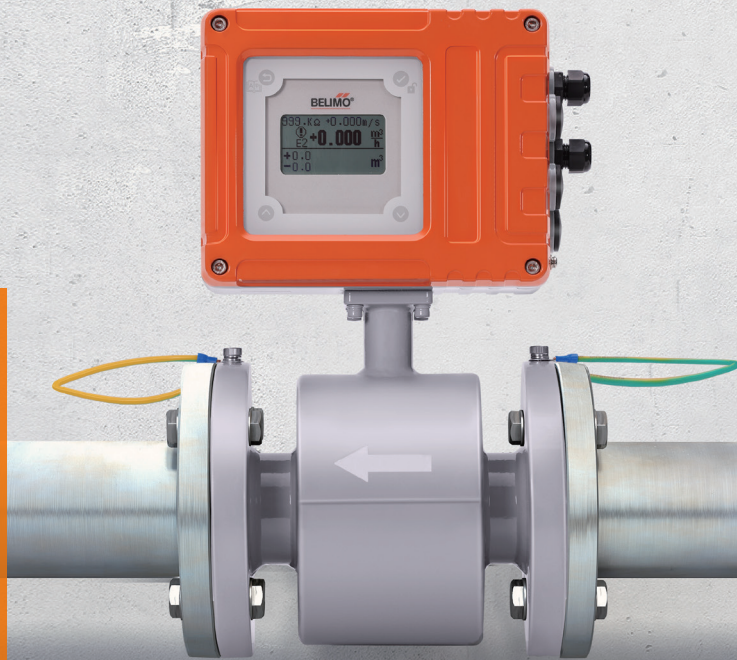


# Bi-directional flow measurement



## Belimo Electromagnetic Flow Meters

Belimo Electromagnetic Flow Meters operate on Faraday's Law of Electromagnetic Induction, measuring flow velocity through the interaction between a magnetic field and conductive fluids. Ideal for HVAC and district cooling & heating systems, they offer stable bidirectional flow monitoring, easy installation, and minimal maintenance.

- Forward & reverse flow measurement
- High accuracy with stable and reliable operation
- Measurement of instantaneous flow, velocity, and totalized flow
- Versatile output options for flexible integration
- LCD display for intuitive operation

# Unrivaled Precision Unwavering Stability

## High Accuracy & Fast Response

Equipped with a high-performance processor and optimized filtering algorithms, it delivers rapid response times while ensuring accurate and stable measurement data



## Flexible Integration

Standard outputs include 4–20 mA, pulse/frequency, and Modbus RTU. Ports feature output protection, lightning protection, and other safety measures

## Proven Reliability

Rigorously tested in accordance with stringent national standards, including JJG 1033-2007 and JB/T 9248-2015



## LCD Display

LCD Display with Chinese/English Menu  
User-friendly and easy to operate

## Low Power Design

Incorporates an optimized excitation circuit design to achieve minimal power consumption, delivering significant energy-saving benefits



## Easy Installation & Maintenance

Featuring a simple structure and quick wiring design, the meter is easy to install and service. It comes standard with grounding electrodes, eliminating the need for additional grounding rings



## Electromagnetic Flow Meters

Size	DN15...600	
Measuring accuracy	±0.5%	
Output signal	4...20mA, pulse or frequency, Modbus RTU	
Flow rate	0.5...15 m/s	
Measuring fluid	Water and water-glycol mixtures (the required conductivity is greater than 20 µS/cm)	
Fluid temperature	-20...120°C (F4) -10...60°C (CR)	
Degree of protection	IP67	
Materials	Lining	CR or F4(PTFE) optional
	Electrode	Stainless steel 316L
	Flow guide tube	Stainless steel 304
	Housing	Carbon steel Q235A
	Housing (transmitter)	Aluminium alloy



Technical Support Hotline: 400-066-2007

©2026 Belimo Automation (Shanghai) Co., Ltd. Copyright BEFM2603L2P

Subject to technical modifications

