



**Belimo RetroFIT+**

**Enhanced Energy Efficiency,  
Carbon Reduction, and Comfort  
Through Field Device Retrofits**



Discover the advantages  
[www.belimo.com](http://www.belimo.com)

**BELIMO**<sup>®</sup>

# Optimize your system with HVAC upgrades



Every building faces challenges, whether big or small. Tackling them effectively can lead to numerous benefits. Simple adjustments can create impressive results and, with a little extra effort, you can have an even greater impact. Adapting the heating and cooling system provides substantial advantages but is not always necessary. At Belimo, we believe in taking small steps for significant gains - "Small devices, big impact."





# Transforming buildings and the environment through RetroFIT+

HVAC systems are designed to create comfort and a safe and healthy indoor environment. However, to accomplish this, these systems consume approximately 40% of all the energy used in buildings. And with buildings accounting for a substantial 40% of global energy consumption, the significance of optimizing energy usage cannot be overstated.

Strategic measures aimed at reducing energy consumption not only enhance a building's operational efficiency and cut costs but also play a pivotal role in global energy conservation efforts. Changes to HVAC systems also play a pivotal role in reducing carbon emissions. By prioritizing energy-efficient solutions and adopting innovative HVAC technologies, businesses can not only save money but contribute to a more sustainable future.



## 6 Reasons Why You Should Retrofit Your Building

### Reason 1

#### Energy Savings

Retrofitting HVAC systems can significantly enhance energy efficiency, which helps reduce energy consumption and costs.

### Reason 2

#### Improved Comfort

Retrofitting can enhance indoor air quality and thermal comfort, creating a healthier and more enjoyable environment for occupants.

### Reason 3

#### Increased Property Value

Energy efficient buildings are more attractive to buyers and renters, leading to increased property value and higher occupancy rates.

### Reason 4

#### Resource Conservation

Retrofitting extends the lifespan of existing buildings, reducing the need for new construction and preserving natural resources.

### Reason 5

#### Reduced Emissions

Buildings account for approximately 40% of global CO<sub>2</sub> emissions. Retrofitting helps lower operational emissions, contributing to climate change mitigation efforts.

### Reason 6

#### Incentives and Compliance

Government incentives are available for commercial Belimo RetroFIT+ projects, while adherence to energy requirements is mandatory for buildings in certain regions.

# Uncovering energy demands and reducing costs with RetroFIT+



## PROVIDENCE COLLEGE

The installation of Belimo butterfly valves and flow meters, along with other system modifications, have generated measurable savings for Providence College. The new system is currently pumping about half the gallons per minute (GPM) that was seen prior to the upgrade.

**80%** less power consumption

**10%** of the total project cost covered by a rebate by the utility provider (National Grid)



## NASHVILLE TENNESSEE STATE OFFICE BUILDINGS

By leveraging the advanced capabilities of the Belimo Energy Valve, Jones Lange LaSalle, property facilities management for Nashville State Office buildings, experienced savings they can see.

**49%** reduction in district energy chilled water.

**\$12,000** savings per month by eliminating thermal inefficiency charges.



## ARDEN HILLS, MINNESOTA LAND O'LAKES, INC. CORPORATE FACILITY

The Sustainability Group wanted to upgrade the facilities HVAC systems due to the age of the system. Energy Valves replacement was put on all six air handling units achieving operational performance.

**15%** less kilowatt usage.

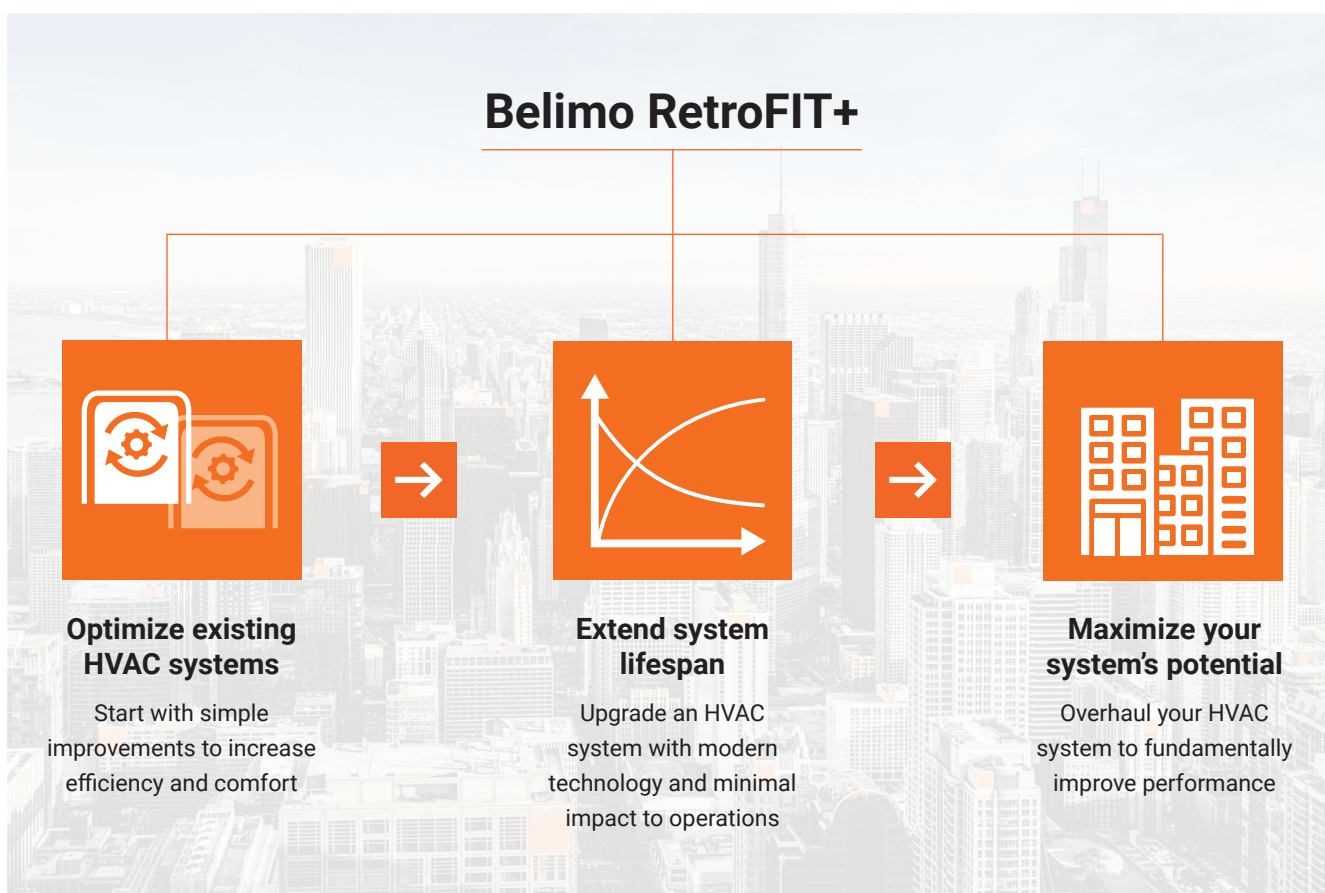
**6,000,000** gallons of pumped water savings over three months.

# Choose your level of impact

Retrofitting is a major component of any building's lifecycle. It can feel overwhelming, but, in most cases, is easier than you may expect.

Starting with small changes, that can be implemented immediately, you can realize a significant gain to your building's efficiency. Applying the technologies of today can provide an even greater impact to your building and your bottom line. If there's substantial room for improvement, replacing the entire HVAC system provides maximum efficiency and the most amount of energy savings and increased comfort.

Wherever you want to begin, Belimo can help you improve your system performance, so you realize the benefits of retrofitting with minimal disruptions and minimal cost.



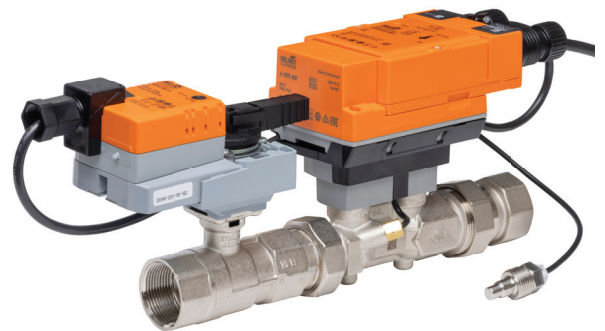
# Modernize the built environment for the future

Buildings are dynamic, their purpose and performance change over time. Therefore, it is important that the systems and technical equipment are also adapted to accommodate these changes.

## Modern Technology

One way to advance your building's progress is by utilizing modern field device technology. This technology has significantly improved over time and can be easily integrated into your existing infrastructure, offering numerous benefits. Instead of just replacing outdated devices with similar ones, consider adopting modern solutions that can greatly enhance performance.

For instance, transitioning from older pressure-dependent valves to modern electronic independent valves can significantly improve efficiency and comfort, while also addressing specific control challenges. This shift can have a substantial impact on your building's overall efficiency and effectiveness.



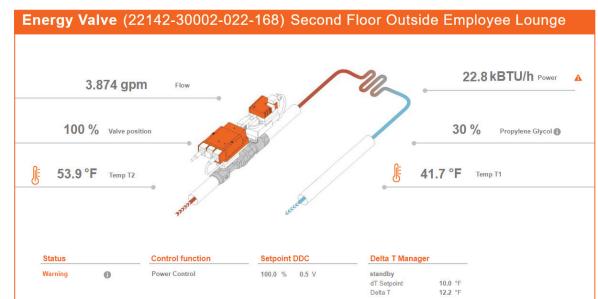
## System Transparency

As buildings age, it's likely they are not optimized for their current situations. That's why it's critical to create transparency into how the building systems are performing so you'll know when you're on the right path toward performance improvement.

Belimo's Energy Valve™ provides the transparency you need as well as performance optimization, and it communicates directly with your building management system. Only when you know where your energy is going can you fully optimize your savings.

## Easy Access to Energy Valve Information

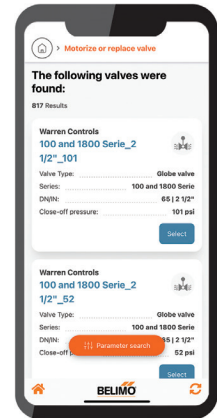
Web view is an onboard graphical user interface that provides the ability to easily configure and change parameters on the Belimo Energy Valve and Thermal Energy Meter. The operation overview provides flows, temperatures, energy, glycol concentration, Delta T, operational errors, and other system information, along with historical trend data.



# Belimo tools that simplify retrofits and ensure optimal system performance

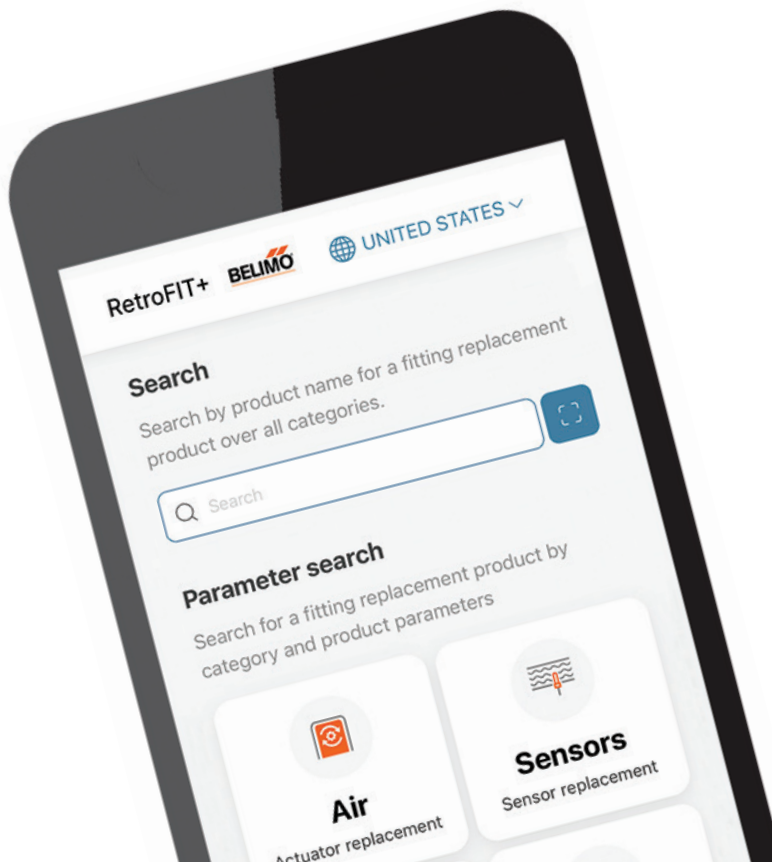
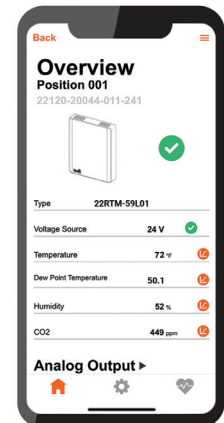
## Effortlessly upgrade to a Belimo product with the Belimo RetroFIT+ App

The Belimo RetroFIT+ App is designed to help you seamlessly find the perfect replacement for your old or damaged actuator or sensor. Whether you're looking for air applications or water solutions, modernizing or replacing your installation, our app will quickly guide you to the ideal actuator or sensor that caters to your needs while providing top-quality and high performance.



## Easily access application data with the Belimo Assistant App

The Belimo Assistant App provides quick programming, commissioning, and troubleshooting of Belimo products with integrated Near Field Communications (NFC). With a Smartphone, application data is easily accessible, even when the actuator is not supplied with voltage.





# Exceptional service

At Belimo, we continually invest in new technologies that increase customer value by improving occupant comfort, energy efficiency, simplified installation, and maintenance-free operation. Our sales team is available to consult and provide insight and advice on how to achieve the best solution to help increase your system performance. Belimo will continue to focus on providing you with exceptional product availability, fast delivery times, and world-class customer service and technical support. We remain dedicated to continuously improve our standards and are committed to providing you with the highest value possible.

Whatever your HVAC application, our global network of support experts are on hand and ready to assist.



Global support



Tested quality



On-time delivery



Extensive service



Complete product range

